

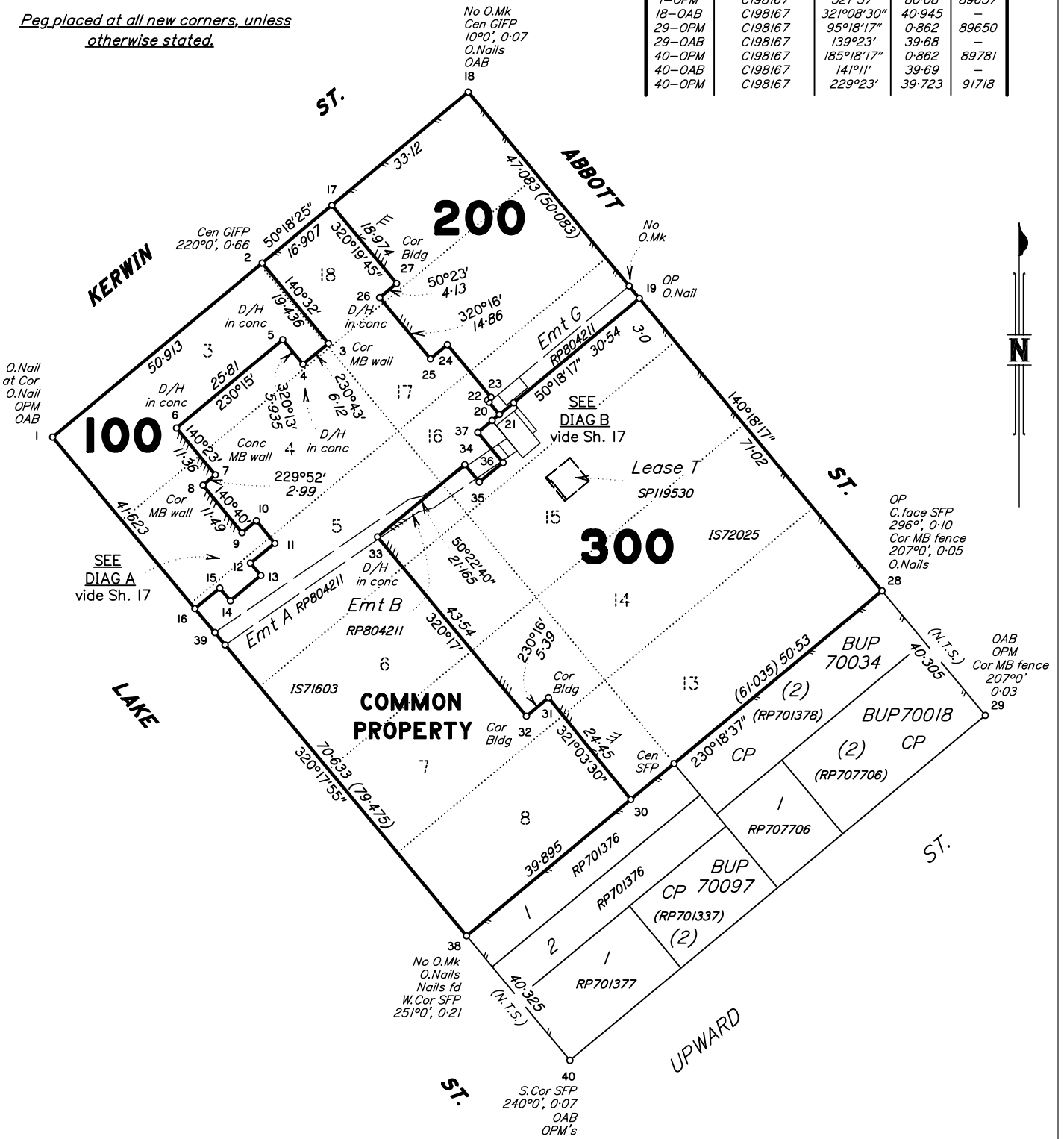
GROUND LEVEL FOOTPRINTS

Volumetric Lots have been marked where they intersect ground level.

Peg placed at all new corners, unless otherwise stated.

PERMANENT MARKS

PM	ORIGIN	BEARING	DIST	NO
1-OAB	C198167	276°10'40"	57.01	-
1-OPM	C198167	321°37'	80.08	89657
18-OAB	C198167	321°08'30"	40.945	-
29-OPM	C198167	95°18'17"	0.862	89650
29-OAB	C198167	139°23'	39.68	-
40-OPM	C198167	185°18'17"	0.862	89781
40-OAB	C198167	141°11'	39.69	-
40-OPM	C198167	229°23'	39.723	91718



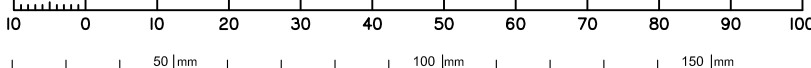
Lot 100 Ground Level Area: 1245 m²

Lot 200 Ground Level: 1724 m²

Lot 300 Ground Level: 4461 m²

Ground level of footprints of Lots 100, 200 & 300 range from RL2.2 to RL 2.7.

Scale 1: 750 – Lengths are in Metres.



State copyright reserved.

Insert Plan Number

SP